

THE UNIVERSAL NOVO-SIT SYSTEM



A system offering you all possibilities for your pipeline projects.

The UNIVERSAL NOVO-SIT System offering new perspectives in pipeline construction!

The UNIVERSAL NOVO-SIT is a push-in self-anchoring joint system. It guarantees you an absolute easy handling in the connection of pipes, fittings and valves with only one unique system for almost all your pipeline projects.

Thanks to the double chamber UNIVERSAL NOVO-SIT socket, the functions of "tightness" and "self-anchoring" can be managed separately to assure ideal performance on each.

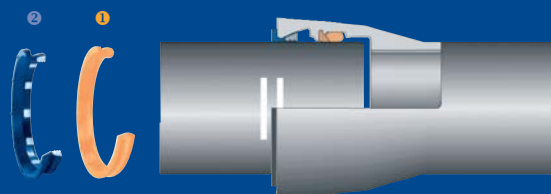
Your advantages:

- A complete choice of pipes, fittings and valves
- Highest reliability and durability
- Fast, secure and easy assembling
- Fast delivery 24h guaranteed
- Easy system design due to one connection type
- No need of concrete blocks
- Compatibility to other materials and systems
- No longitudinal electric conductivity
- Earthquake stability

UNIVERSAL NOVO-SIT improves your competitiveness in pipeline construction offering you a solution minded complete and unique programme of pipes, valves and fittings.



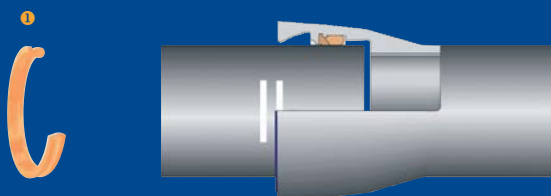
www.wildarmaturen.ch



UNIVERSAL NOVO-SIT, DN 80 – 800

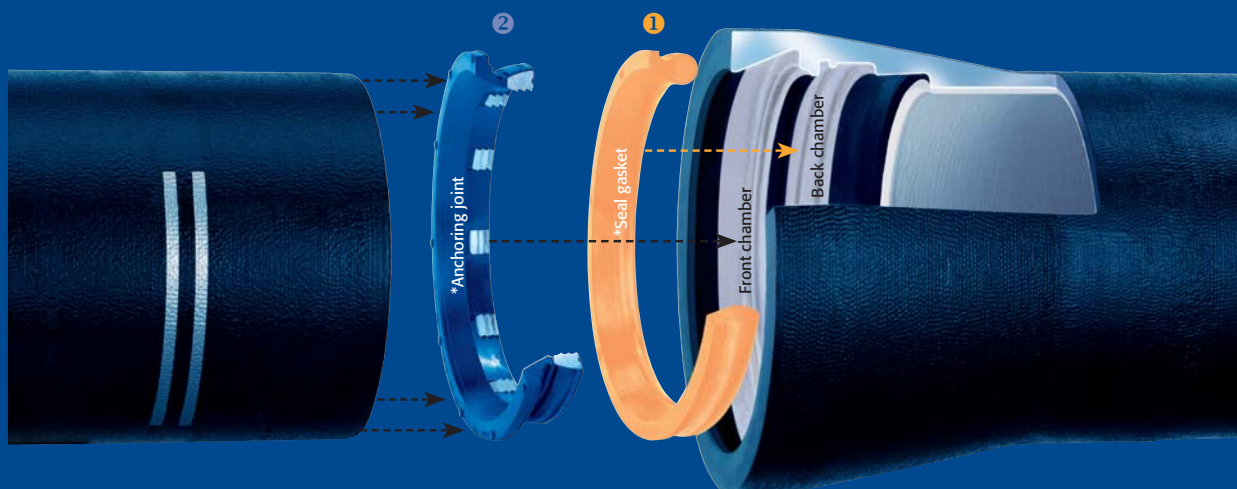
The Tyton or Standard sealing gasket (1) is placed in the rear chamber of the socket whereby the NOVO-SIT anchoring joint (2) is placed in the front chamber assuring anchorage on high operating pressure and forces. After assembling, the anchorage is already active and fully in place. Tightness is highly assured by the well known Tyton or Standard elastomeric gaskets. The basic principle of push-in self-anchored joint gaskets consists in transmitting the axial forces from one pipe component to the next, thus ensuring that the joint does not come apart. The NOVO-SIT joint gasket with its inserts anchors the socket joint by hooking onto the pipe spigot and so avoids installing concrete blocks. A further advantage is the isolating function of each socket towards the spigot part ensuring galvanic separation.

UNIVERSAL



UNIVERSAL TYTON or STANDARD, DN 80 – 2000

The Tyton or Standard (depending on DN size) sealing gasket guarantees a perfect and of course tight connection of all pipe components. If anchoring is not required, the front chamber of the socket remains empty.



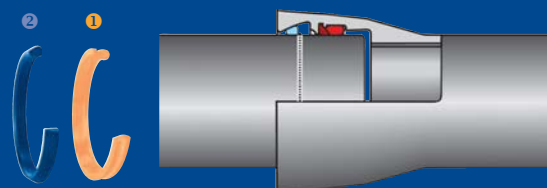
- ❶ Depending on project profile or diameter the Tyton or Standard sealing gasket is fitted in the back chamber of the socket.
 - ❷ If you request self anchoring, the NOVO-SIT or TIS-K push-in anchoring joint will be fitted in the front chamber of the socket.
- * Anchoring joint and seal gasket are only coloured for illustration purposes.

AL NOVO-SIT



UNIVERSAL TYTON-SIT, DN 80 – 300
UNIVERSAL TYTON-SIT PLUS, DN 80 – 600

The Tyton-SIT or Tyton-SIT Plus seal and anchoring gasket have a double function ensuring tightness and self anchoring with one ring although limited to lower operating pressure.



UNIVERSAL TIS-K, DN 100 – 1200

The TIS-K self anchoring ring is placed in the front chamber of the socket. The spigot has a work applied weld bead. We recommend the TIS-K System with weld bead for all projects with very high operating pressure, bigger diameters, for bridges, trenchless laying or replacement of existing pipes.

The UNIVERSAL ductile iron pipes with a variety of coatings offer you the best solution to all your project needs.

In combination with the UNIVERSAL assembling system NOVO-SIT or TIS-K we offer you a wide range of ductile iron pipes with different coatings based to cover all the individual environmental situations on site.

INTERNAL LININGS

All internal linings are in conformity with national and international compliances. The materials listed are totally compatible with drinking water distribution applications. Mostly we apply the cement mortar lining (HOZ). According to standard EN 545, ISO 4179, the cement mortar lining is applied by centrifugal process. With this method the mortar is introduced into the pipe and rotated at very high speed, giving good lining compaction. The lining is then cured under controlled temperature and humidity conditions, giving it the optimum mechanical strength. The spinning process has the advantage of producing a smooth internal surface layer.

For aggressive water we suggest a special cement mortar (TSZ), polyurethane or ductan liners.

VARIETY OF PIPE

Internal linings:

- Cement mortar (HOZ)
- Cement mortar (TSZ)
- Polyurethane
- Ductan

External coatings:

- Zinc-aluminium (NATURAL)
- Cement fibre mortar (ZMU)
- Polyethylene (PE)
- Polyurethane (PUR)

We offer the full range of ductile iron pipes from size DN 80 mm up to 2000 mm.



www.wildarmaturen.ch

EXTERNAL COATINGS

The most recent technical innovation NATURAL, some call it a revolution in external coatings of ductile iron pipes, consists of 400 g/m² zinc-aluminium alliance and an epoxy sealer. New standards are set by NATURAL, offering an up to 5 times longer life cycle compared to standard metallic zinc 200 g/m² coating. The active protection mechanism has been proved over 20 years during practical test series. Nowadays thousands of kilometers of pipes are sold all around the world. Even after damaging the coating down to the ductile iron surface, the NATURAL protection system works actively. The damaged parts are perpetually covered, assuring continued protection during the lifetime foreseen.

All other coatings such as fibre-cement or polyethylene receive a base metallic zinc 200 g/m² minimum before they are treated with the final coatings.

HOZ NATURAL

DN 80 to DN 600

Internal lining:

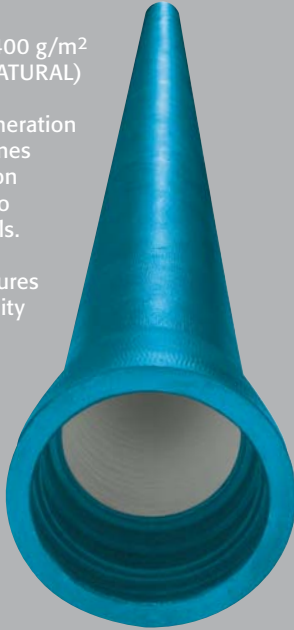
Cement mortar (HOZ)

External coating:

Zinc-aluminium alliance 400 g/m²
and blue epoxy sealer (NATURAL)

NATURAL, the newest generation
of ductile iron pipes. 5 times
longer durability protection
against corrosion. Made to
be used in 90 % of all soils.

One of the particular features
of a zinc coating is its ability
to restore the protective
layer wherever it was
locally damaged.



HOZ ZMU FIBRE CEMENT

DN 80 to DN 700

Internal lining:

Cement mortar (HOZ)

External coating:

Metallic zinc 200 g/m² and
fibre cement coating (ZMU)

The fibre cement coating is an
active and passive protection
system offering the highest
standard in protecting the pipe
against mechanical damage
due to stone or rocks.

Everywhere you cannot
backfill the pipe with very
heterogeneous soils such
as stone-free soil or sand
the fibre cement ZMU
coating is the ideal
solution.



PIPES & COATINGS

HOZ PE/PUR

Polyethylene or Polyurethane

DN 80 to DN 2000

Internal lining:

Cement mortar (HOZ)

External coating:

Metallic zinc 200 g/m² and
polyethylene (PE) or
polyurethane (PUR)

For very aggressive soils and
everywhere you need a
complete isolation of the
pipeline towards the soil,
we will suggest you either
PE or PUR coating,
depending on the
pipe size.



HOZ ZB Zinc-Epoxy

DN 80 to DN 2000

Internal lining:

Cement mortar (HOZ)

External coating:

Metallic zinc 200 g/m² and
a black epoxy paint

Our standard coating,
everywhere you have a
heterogeneous soil to
backfill the pipe.



Valves and fittings completely enamelled inside and outside – the ultimate protection!

Specially conceived for the UNIVERSAL NOVO-SIT assembling system we offer you a complete program of valves and fittings, functional, reliable, based on the highest technical standards.

The newest etec enamelling quality standard and know-how is applied to all our valves and fittings.

Enamel is known as an extraordinary internal and external coating that has proven its durability and reliability since over 50 years.

Your advantages:

- Ultimate corrosion protection
- Excellent protection against aggressive soils
- Very high resistance to mechanical stress factors
- No adherence or nutrition for biofilms
- Hygienically and physiologically absolutely safe
- Climate, UV and ozone resistant
- No aging

The material cohesion between enamel and ductile iron guaranties an outstanding adherence of the coating materials.



2004 FN
PN 10/16
DN 80 – 200
enamelled



4004 N
PN 10/16
DN 80 – 300
enamelled



Multi I 613
PN 10/16
DN 80 – 800
Outlet: DN 80 – 200
enamelled



Multi I 614
PN 10/16
DN 80 – 800
Outlet: 40 – 200
enamelled

VALVE



MK NOVO-SIT
5°, 11°, 22°, 30°, 45°
DN 80 – DN 800
enamelled



MQ NOVO-SIT
90°
DN 80 – DN 800
enamelled



B NOVO-SIT
DN 100/100
– DN 200/100
enamelled



MI NOVO-SIT
DN 80/80
– DN 500/500
enamelled



www.wildarmaturen.ch



4004 NS
PN 10/16
DN 80 – 300
enamelled



AK NOVO-SIT
PN 10/16
DN 150 – 500
enamelled



4004 NPE
PN 10/16
DN 80 – 300
Outlet: PE 90 – 355
enamelled



2004 NFPE
PN 10/16
DN 80 – 200
Outlet: PE 50 – 250
enamelled



Multi I 615 PE
PN 10/16
DN 80 – 800
Outlet: PE 50 – 250
enamelled



Multi III 636
PN 10/16
DN 80 – 300
Outlet: 80 – 300
enamelled



Multi III 633
PN 10/16
DN 80 – 200
Outlet: 80 – 200
enamelled



Multi III 635 PE
PN 10/16
DN 80 – 300
Outlet: PE 90 – 355
enamelled

S & FITTINGS



MMK NOVO-SIT
5°, 11°, 22°, 30°, 45°
DN 80 – DN 800
enamelled



MMQ NOVO-SIT
90°
DN 80 – DN 800
enamelled



MMB NOVO-SIT
DN 80/40
– DN 800/800
enamelled



MMA NOVO-SIT
DN 80/40
– DN 800/800
enamelled



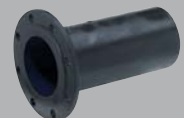
IT NOVO-SIT
DN 80/80
– DN 400/400
enamelled



MMR NOVO-SIT
DN 100/80
– DN 800/700
enamelled



EU NOVO-SIT
DN 80 – DN 800
enamelled



F NOVO-SIT
DN 40 – DN 800
enamelled

WILD ARMATUREN AG: YOUR PARTNER FOR OUTSTANDING SERVICES



ADVICE

Project design, tender descriptions, orders, logistical facilities, supervision, assembling instructions – our qualified team is ready to serve you in all aspects of your pipeline projects.



SOIL AND WATER ANALYSIS

Normally our internal and external coatings are proven for the majority of their use. Nevertheless should you request a more profound analysis, we are pleased to advise you.



SOFTWARE AND TECHNICAL DATA

On our website www.wildarmaturen.ch you will find numerous technical data either to help you in CAD design, handling and installation instructions, as well as product descriptions for tenders.



TECHNICAL SUPPORT

On site, our experienced technicians will coach your staff whenever needed.



EQUIPMENT SERVICES

We offer you the equipment you need to assemble and install pipes, valves and fittings. Specialized and easy handling equipment is at your disposal. Whatever you need to make the installation process easier, safer and faster, we will deliver in the shortest time and support you until the final pressure test.



24 HOUR SERVICE

Our stock is very well structured and offers you a complete range of pipes, valves, fittings and accessories. We will provide delivery in 24 hours or even faster if needed.



REFERENCES AND KNOWLEDGE

We do know that knowledge is worth gold, especially in non common projects. For more than 35 years we profit from knowledge given to us in a big variety of all kind of projects. It would give us great pleasure to join this ground of experiences with you.



QUALITY

We are ISO 9001:2008 certified. But honestly, quality is only proven by working together. Give us a chance and we will prove you the WILD Team Quality.



WILD ARMATUREN AG
INDUSTRIE BUECH 31
CH-8645 JONA-RAPPERSWIL
TELEPHONE 055 224 04 04
FACSIMILE 055 224 04 44
WILD@WILDARMATUREN.CH
WWW.WILDARMATUREN.CH